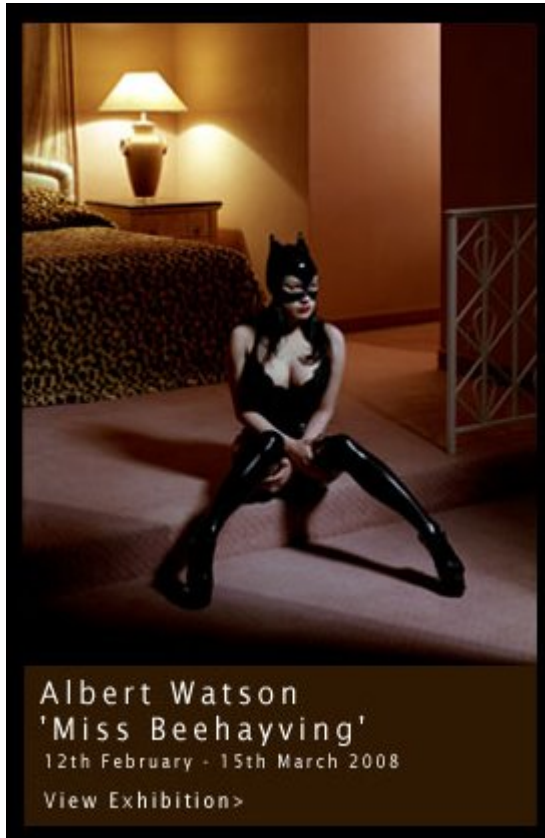


Yesterday was a really pleasant day. It was brisk cold in the morning, and never did warm up much. I started my day with a trip down to Leicester Square and the Tkts booth. I scored a cheap seat for Tango Por Dos at The Peacock Theatre for 7:30, and then headed down to Green Park to check out the Queen's gardening prowess and write a post card or two. Here is a view of the park shrouded with fog (freezing fog, as the weather reports had it, but they



exaggerate):

From there I went in search of [Hamilton's Gallery](#), a toni gallery in Mayfair catering in exclusive photography. I had seen that they had an exhibit of 12 new pieces by [Albert Watson](#) "Miss Beehayving" that I wanted to see.



Now my friend LJ had warned me about certain neighbourhoods: “a Dodgy part of town. Southwark...but very cool and interesting” she wrote. Well, no one warned me about Mayfair! This is a very scary place indeed. More money is poured into real estate here than just about anywhere else on the planet. The most expensive flat here is a new penthouse going up with a A£100Million price tag. I wasn’t really sure where “13 Carlos Place” was, and it didn’t show on my map, so I just kept strolling around, doing a grid, hoping that I would find it. I even asked a helpful cabby, but without luck. Finally gave up and bailed. Here is one place I came across on my search. Don’t let the name confuse you, its just a bunch of high-priced “Global Consultants”:



The only folk I know consult globes are fortune tellers, and I imagine they cost less, too. Then it was off to Tate Modern — They have a big new exhibit on [Duchamp, Man Ray and Picabia](#). That's down by Southwark, sorry LJ! I took the tube to London Bridge and headed for the Thames. Here's a set of photos taken from one spot, just to show how different a place looks depending upon which way you're facing:
South:



East:



West:



Here's Tower Bridge:



And here's the Tower of London"



I then strolled on along the Queen's Walk to the Tate. Along the way I found The Clink:



Don't want to get thrown in there!

Well, in keeping with my fecklessness, I didn't bother to check the dates on the new show, and it doesn't open until the 21st. Oops! Oh well. I have seen a lot of DuChamp and Man Ray exhibitions, so if I miss it it's not the end of the world. I went ahead and checked out the permanent collection and then cross the Millennium Bridge and take a tube back home. There will be laundry!